

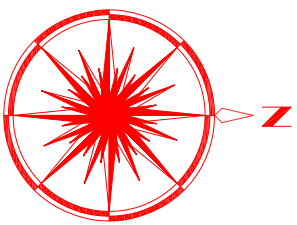
BEQUIA
SOUTH SIDE



1 LOCATION PLAN
Scale: NTS
CG-A101

REVISIONS		DRAWN		CHECKED		DATE	
NO.	DATE	NO.	DATE	NO.	DATE	NO.	DATE
1		9					
2		10					
3		11					
4		12					
5		13					
6		14					
7		15					
8		16					

		BRD/BLD OFFICE: PROJECT OFFICE: BRD/BLD, STANBURY TEL: +1-868-262-3888	
ST. MARGARET CHURCH: 14, TOWN OF BEQUIA CALIFORNIA, ST. MARGARET BUILDING #2 TEL: +1-868-262-3888 EMAIL: hutchinson@hutchinson.com		CLIENT: NORTHERN GRENADINES COMMUNITY DEV. INC. (NGCDI) PROJECT: MULTIPURPOSE CENTER EMERGENCY / SATELLITE WAREHOUSE/ CHAPEL GELITZEAU, BEQUIA	
DRAWN: SHAMUN CHECKED: HCOL DATE: JANUARY 2019 SCALE: AS SHOWN		SHEET NO.: 0 TOTAL SHEETS: 0	



LINE	BEARING	DIST. (FT)
B1 - B2	52° 43'	42.25
B2 - 3	87° 46'	190.56
3 - 4	175° 11'	381.25
4 - 1A	94° 03'	216.89
1A - 1	273° 32'	15.15
1 - M	175° 40'	149.37
M - B1	175° 54'	182.34
3 - L	101° 05'	91.92
L - L7	3° 50'	100.26
L7 - 4	11° 07'	267.22



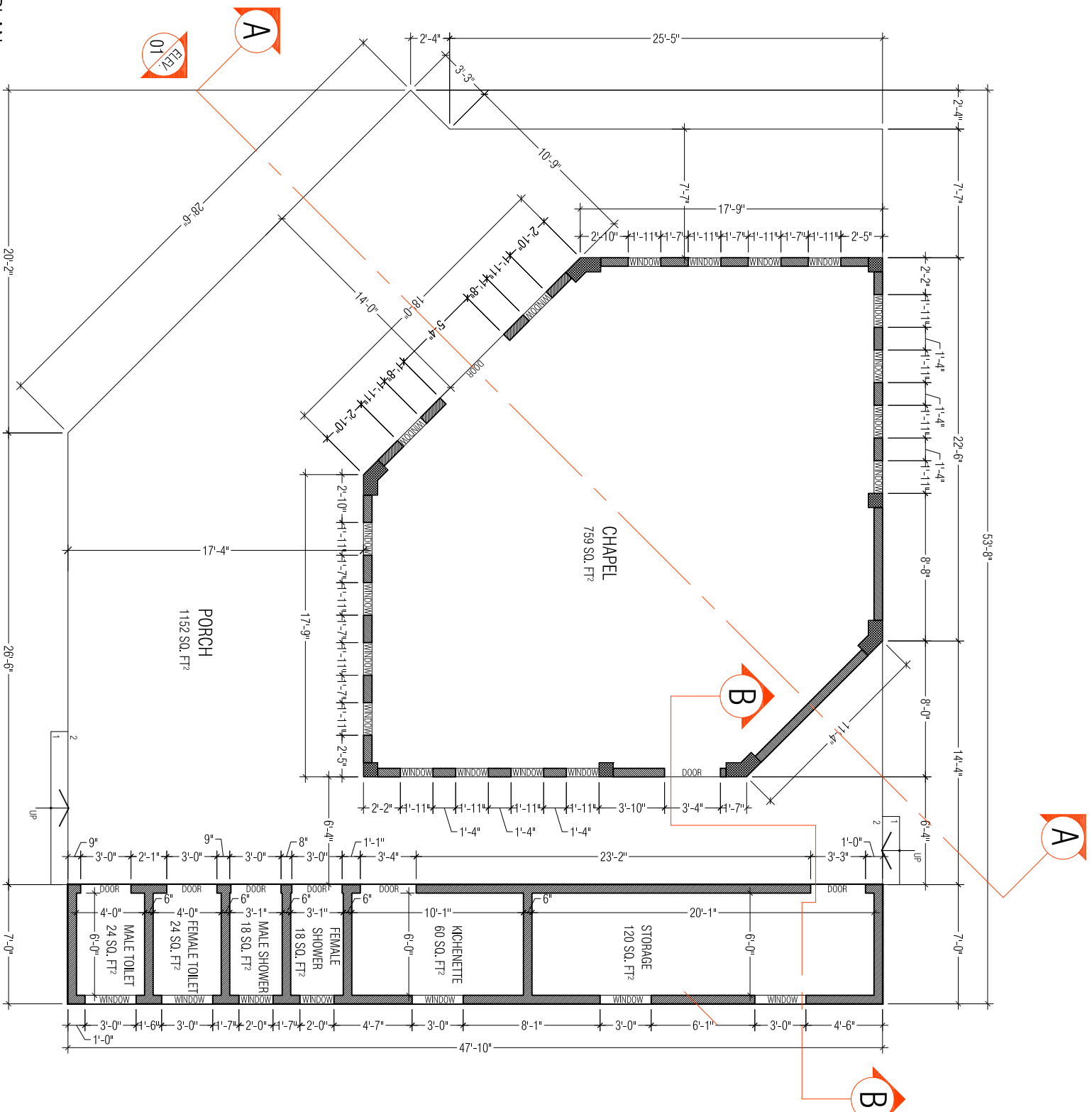
1 SITE PLAN
Scale: 1:750

NO.	DATE	REVISIONS	BY	DATE
1				
2				
3				
4				
5				
6				
7				
8				
9				
10				
11				
12				
13				
14				
15				
16				

NO.	DATE	REVISIONS	BY	DATE
1				
2				
3				
4				
5				
6				
7				
8				
9				
10				
11				
12				
13				
14				
15				
16				

	PROJECT: NORTHERN GRENADINES COMMUNITY DEV. INC. (NGCDI) MULTIPURPOSE CENTER EMERGENCY / SATELLITE WAREHOUSE/ CHAPEL GELIZEAU, BEQUA
	DRAWN: [] CHECKED: [] DATE: JANUARY 2019 SCALE: AS SHOWN

CLIENT: NORTHERN GRENADINES COMMUNITY DEV. INC. (NGCDI)	PROJECT TITLE: MULTIPURPOSE CENTER EMERGENCY / SATELLITE WAREHOUSE/ CHAPEL GELIZEAU, BEQUA
DRAWING NO.: CG-A102	SHEET NO.: 0



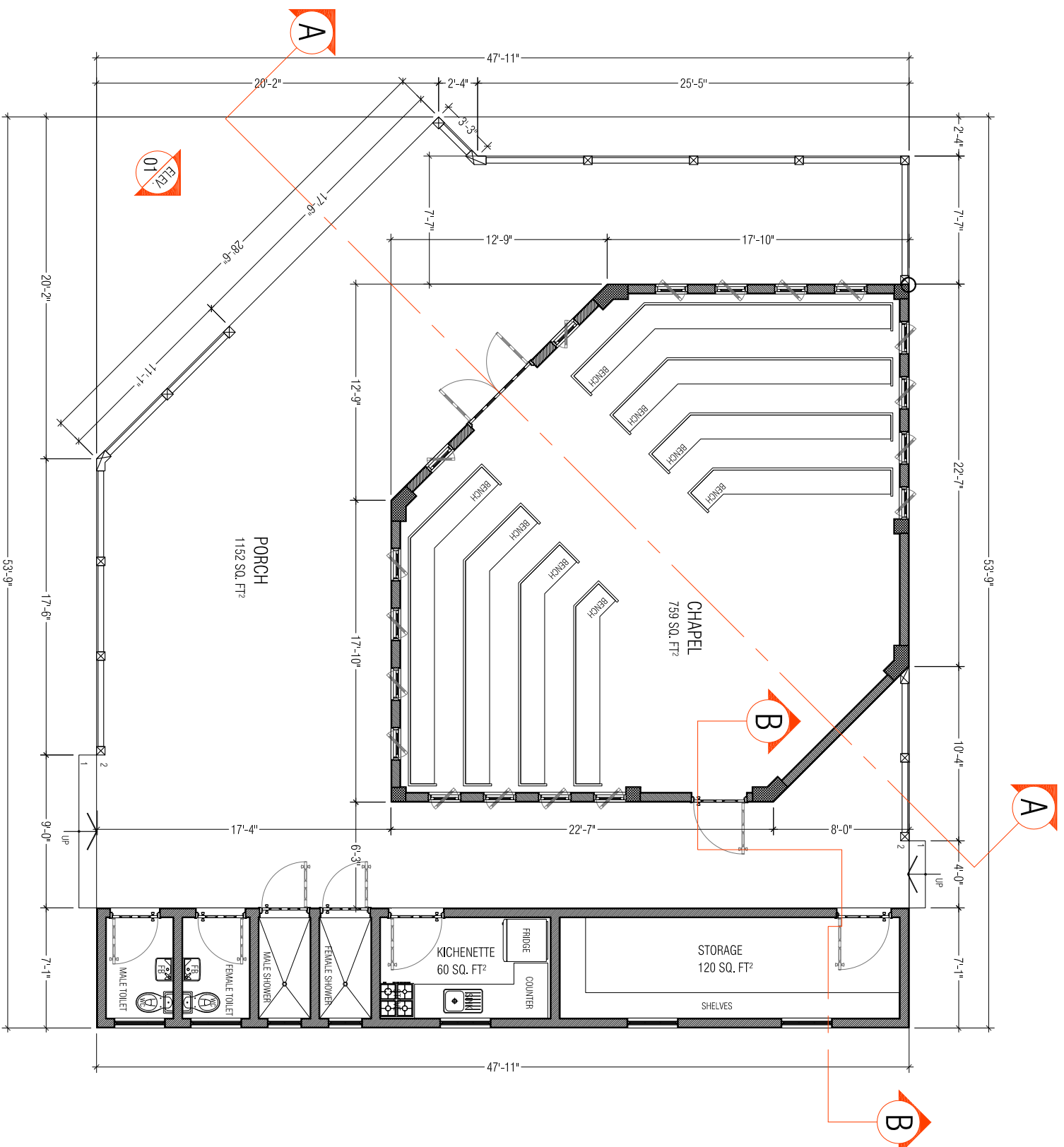
1
MASONRY FLOOR PLAN
Scale: 1/8" = 1'-0"

NO.	DATE	REVISIONS
1	2/26/19	ISSUES, REPHRASE, STORAGE & WASHING ROOM
2	2/26/19	REWORK OF TILES, SINKS, REPHRASE, STORAGE CORNER.
3		
4		
5		
6		
7		
8		

Hutchinson Construction Company Ltd.

PROJECT OFFICE:
BEQUA, ST. MARGARET
REC. 1-10-40-3088
ST. MARGARET OFFICE:
CALUMBA ST., MARGARET
REC. 749-259919
EMAIL: hutchinson@vepurd.com

DESIGNED	CHECKED	DATE	SHEET NO.
SHAMIN	SHAMIN	JANUARY 2019	02
HCL	HCL		
SCALE	AS SHOWN		



1
FLOOR PLAN LAYOUT
 Scale: 1/8" = 1'-0"

NO.	DATE	DESCRIPTION	DRAWN	CHECKED	NO.	DATE
1	2/26/19	SKETCHES, KITCHENETTE, STORAGE & WASHROOM ADDED			9	
2	2/26/19	REVISIONS TO CHAIRS, SKETCHES, KITCHENETTE, STORAGE CHANGES.			10	
3					11	
4					12	
5					13	
6					14	
7					15	
8					16	

**Hutchinson
Construction
Company Ltd.**

PROJECT OFFICE:
 PROJECT MANAGER:
 BRIGIDA STANIMIROVIC
 TEL: +1-868-253-8388
 ST. ANNE'S CENTER:
 CALIFORNIA ST. MONROE
 BUILDING #2
 TEL: +1-868-253-8388
 EMAIL: hutchinson@vep.org.jm

CLIENT:
 NORTHERN GRENADINES COMMUNITY DEV. INC. (NGCDI)

PROJECT TITLE:
 MULTIPURPOSE CENTER
 EMERGENCY / SATELLITE WAREHOUSE/ CHAPEL GELIZEAU, BEQUA

DATE:
 JANUARY 2019

DESIGNED BY:
 HCL

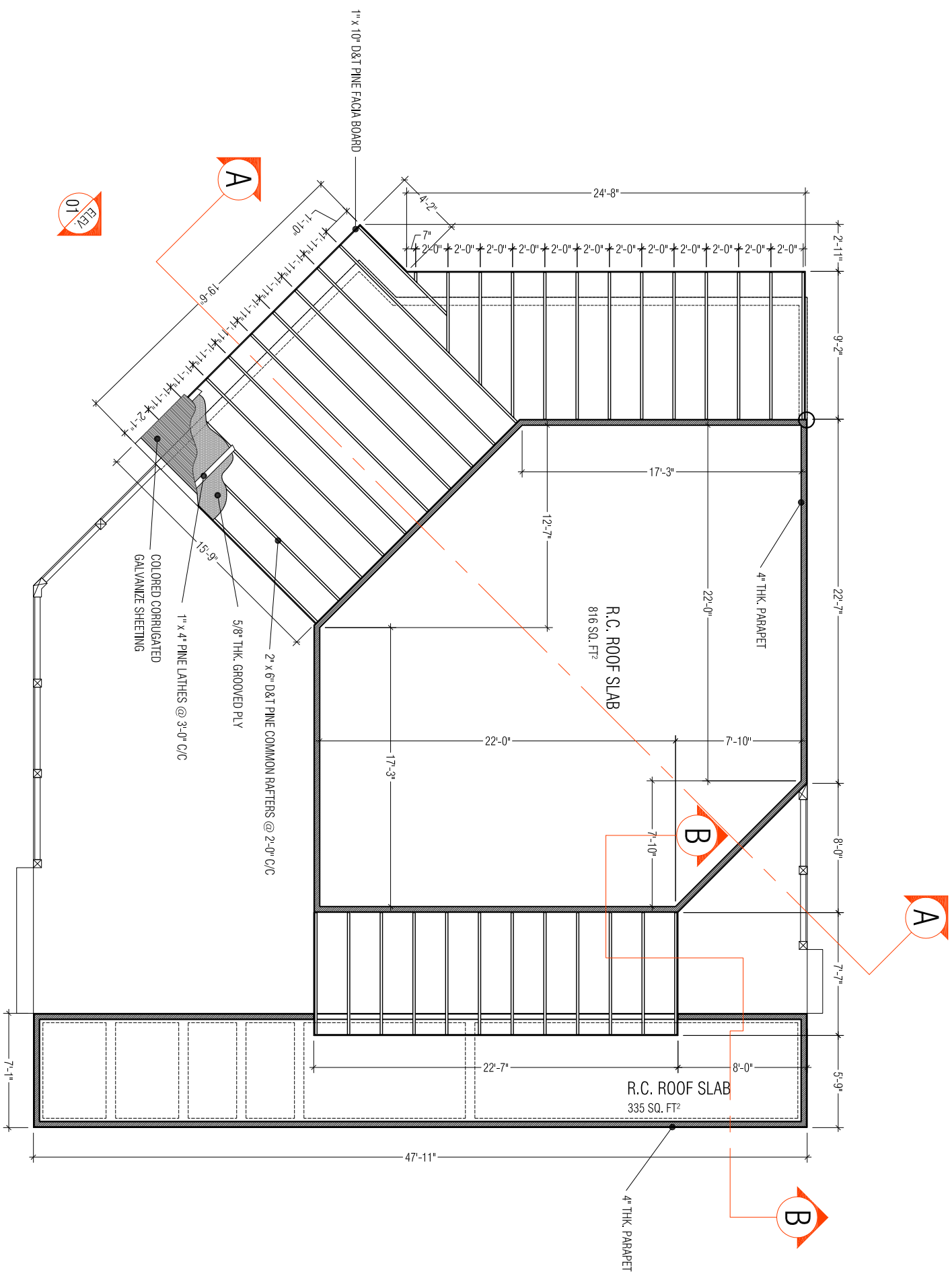
CHECKED BY:
 HCL

SCALE:
 AS SHOWN

FINISH FLOOR PLAN

SHEET NO.
 02

PROJECT NO.
 CG-A202

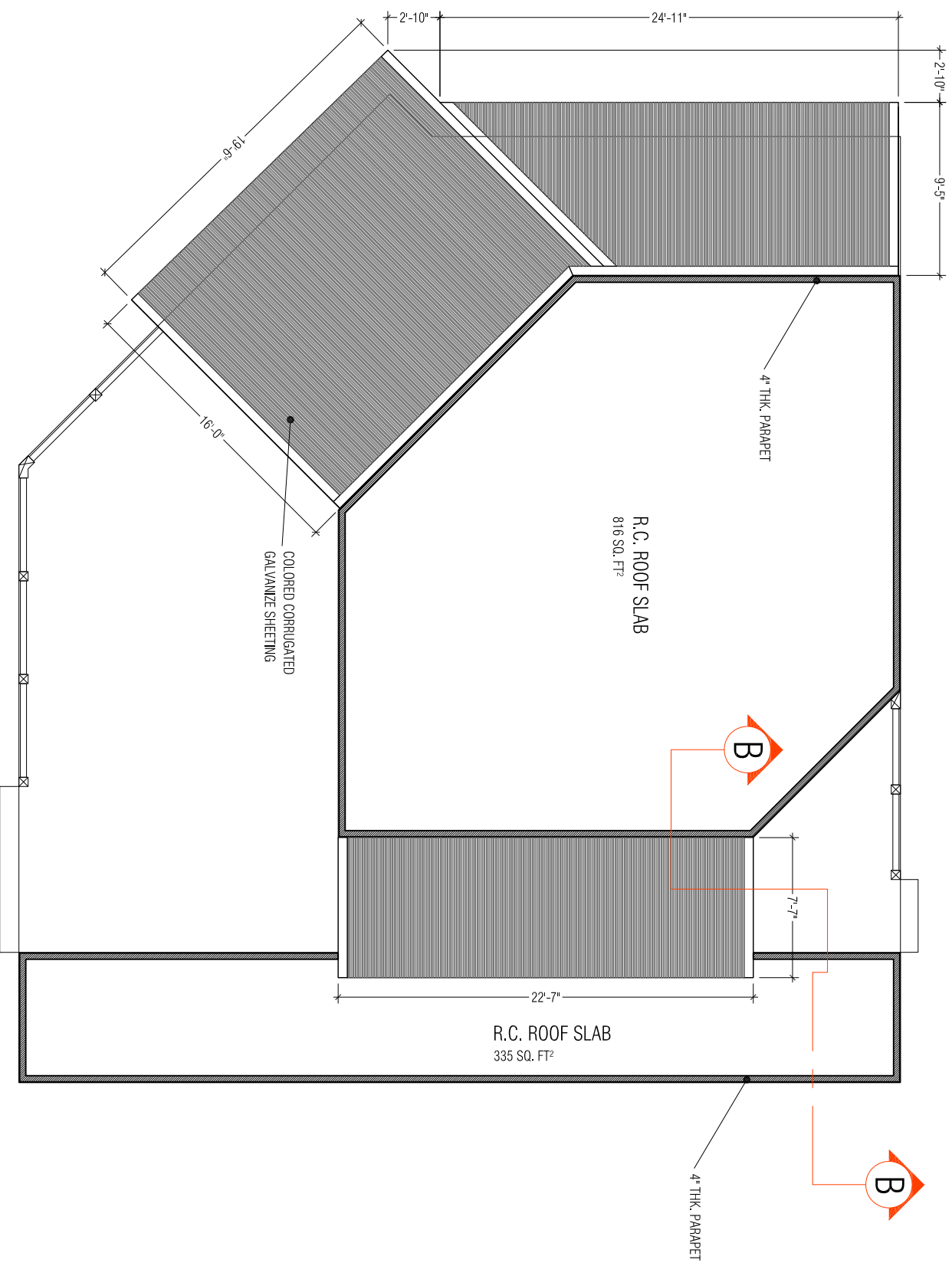


1
ROOF FRAMING PLAN
 Scale: 1/8" = 1'-0"

NO.	DATE	DESCRIPTION	BY	CHECKED	DATE
1	22.6.19	ISSUES, REVISIONS, STORAGE & ARCHIVE WORK			
2	28.6.19	REVISIONS, REVISIONS, REVISIONS, STORAGE & ARCHIVE WORK			
3					
4					
5					
6					
7					
8					
9					
10					
11					
12					
13					
14					
15					
16					

NO.	DATE	DESCRIPTION	BY	CHECKED	DATE
1					
2					
3					
4					
5					
6					
7					
8					
9					
10					
11					
12					
13					
14					
15					
16					


	PROJECT: NORTHERN GRENADINES COMMUNITY DEV. INC. (NGCDI) MULTIPURPOSE CENTER EMERGENCY / SATELLITE WAREHOUSE/ CHAPEL GELIZEAU, BEQUA
	DRAWING TITLE: ROOF FRAMING PLAN
DESIGNED: SHAMUN CHECKED: H.C.L. DATE: JANUARY 2019 SCALE: AS SHOWN	SHEET NO.: 02 REV. NO.:
CLIENT: NORTHERN GRENADINES COMMUNITY DEV. INC. (NGCDI)	PROJECT: NORTHERN GRENADINES COMMUNITY DEV. INC. (NGCDI)

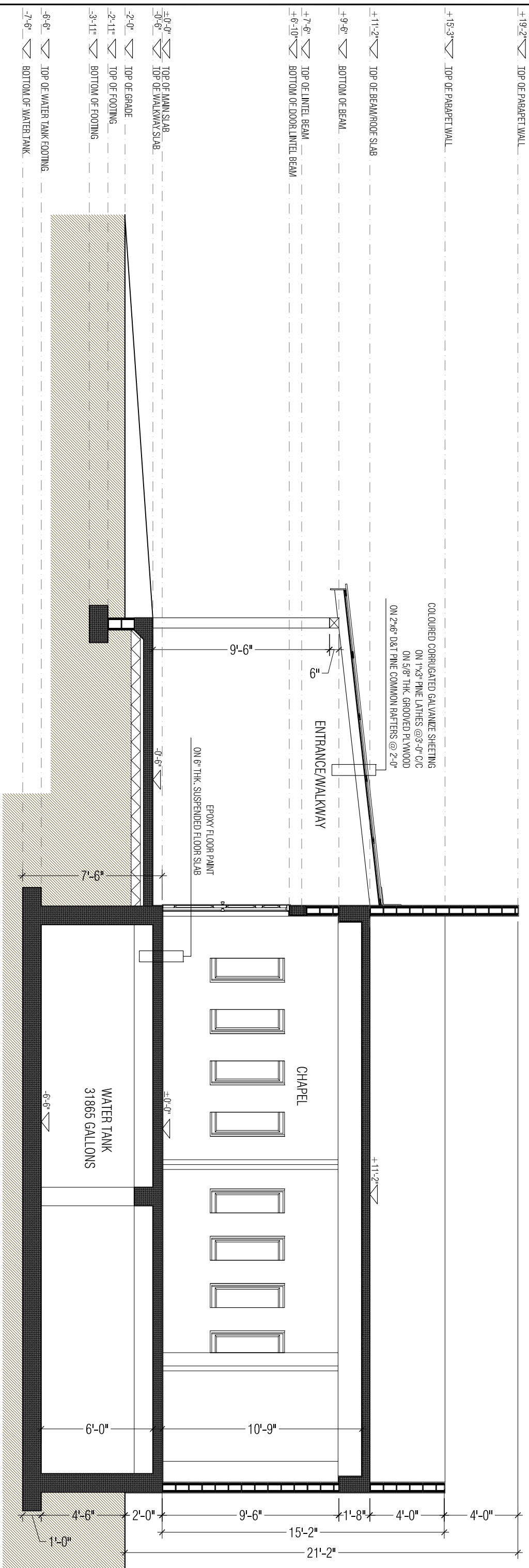


2
ROOF FINISHING PLAN
 Scale: 1/8" = 1'-0"

REVISIONS		REVISIONS	
NO.	DATE	NO.	DATE
1	22.6.19	9	
2	28.6.19	10	
3		11	
4		12	
5		13	
6		14	
7		15	
8		16	

NO. 1 SOONERS, ROOFETTE, STORAGE & WASHING ROOM NO. 2 REPAIRING OF TILES SOONERS, ROOFETTE, STORAGE CHAMBER.	DRAWN CHECKED NO. 9 DATE NO. 10 DATE NO. 11 DATE NO. 12 DATE NO. 13 DATE NO. 14 DATE NO. 15 DATE NO. 16 DATE
---	---

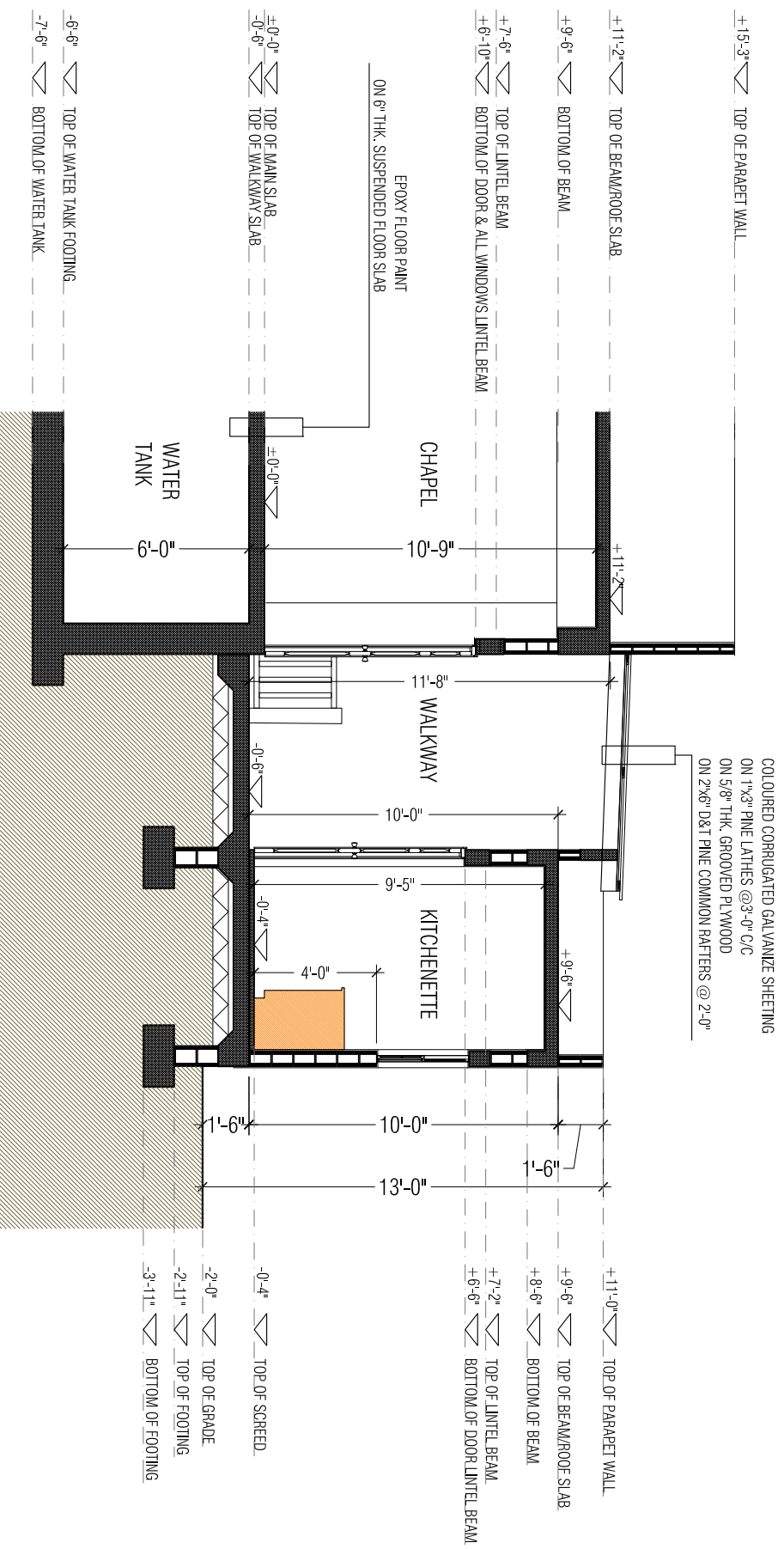
	PROJECT: NORTHERN GRENADINES COMMUNITY DEV. INC. (NGCDI) MULTIPURPOSE CENTER EMERGENCY / SATELLITE WAREHOUSE/ CHAPEL GELIZEAU, BEQUA
ST. ANNE'S CHURCH BEQUA, ST. ANNE'S TEL: +1-868-5088 EMAIL: hutchinson@vopnet.com	DRAWING TITLE: ROOF FINISH PLAN DRAWN: [Name] CHECKED: [Name] DATE: JANUARY 2019 SCALE: AS SHOWN SHEET NO.: 02 REV. NO.: CG-A204



1 SECTION A.-A.
 Scale: 3/16" = 1'-0"

NO.	DATE	DESCRIPTION	DRAWN	CHECKED	NO.	DATE	DESCRIPTION	DRAWN	CHECKED
1	23.6.19	ISSUES, REVISIONS, STORAGE & WATER TANK ADDS			9				
2	24.6.19	REVISIONS, REVISIONS, REVISIONS, STORAGE CHANGES			10				
3					11				
4					12				
5					13				
6					14				
7					15				
8					16				

Hutchinson Construction Company Ltd.		BRIDAL VILLAGE PROJECT OFFICE BEQUA, ST. MARGARET TEL: +1-868-432-3888 FAX: +1-868-432-3889	
ST. MARGARET CHURCH CALCUTTA, ST. MARGARET BUILDING #2 TEL: +1-868-432-3888 EMAIL: hutchinson@stmar.com		CLIENT NORTHERN GRENADINES COMMUNITY DEV. INC. (NGCDI)	
PROJECT TITLE EMERGENCY / SATELLITE WAREHOUSE/ CHAPEL GELIZEAU BEQUA		DRAWN DATE: S.	
SECTION A.-A.		CHECKED DATE: S.	
DATE JANUARY 2019		SCALE AS SHOWN	
SHEET NO. CG-A301		REV. NO. 02	



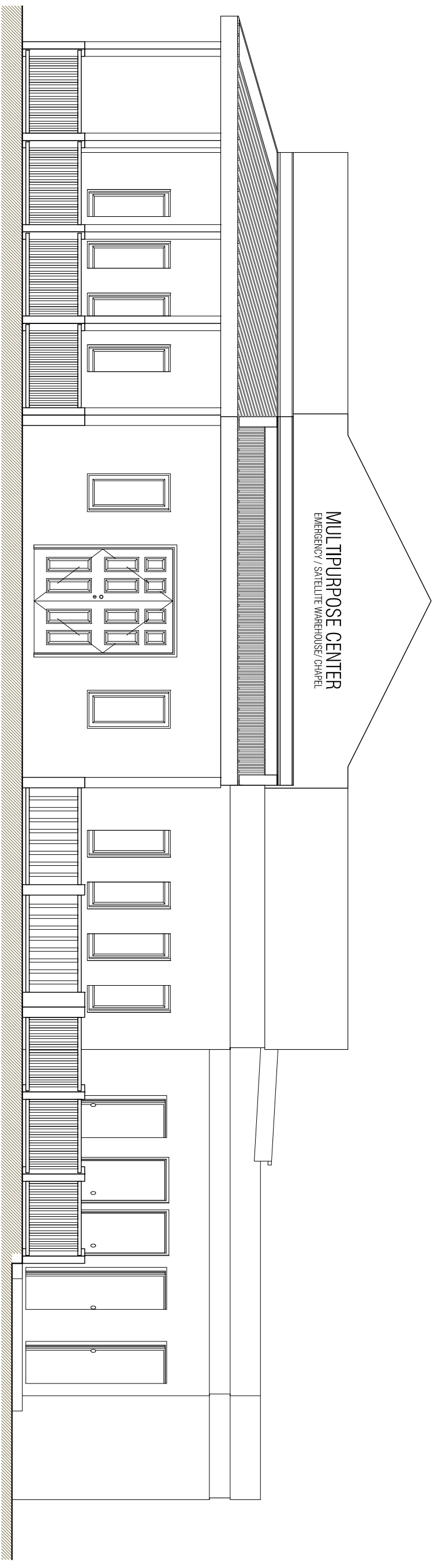
1 SECTION B.-B.
Scale: 3/16" = 1'-0"

REV.	DATE	DESCRIPTION	DRAWN	CHECKED	NO.	DATE
1	2/26/19	ISSUES, REVISIONS, STORAGE & WASHING ROOM			9	
2	2/26/19	REVISIONS TO ISSUES, STORAGE, REVISIONS, STORAGE CHANGES			10	
3					11	
4					12	
5					13	
6					14	
7					15	
8					16	

NO.	DATE	DESCRIPTION	DRAWN	CHECKED
1				
2				
3				
4				
5				
6				
7				
8				

<p>PROJECT: NORTHERN GRENADINES COMMUNITY DEV. INC. (NGCDI) MULTI-PURPOSE CENTER EMERGENCY / SATELLITE WAREHOUSE/ CHAPEL GELIZEAU, BEQUA</p>	<p>SECTION B.-B. SCALE: AS SHOWN</p>	<p>DATE: JANUARY 2019 SCALE: AS SHOWN</p>	<p>SHEET NO.: 02 REV. NO.:</p>
--	--	---	------------------------------------

<p>BRAND: HURCHINSON CONSTRUCTION COMPANY LTD.</p>	<p>PROJECT: NORTHERN GRENADINES COMMUNITY DEV. INC. (NGCDI) MULTI-PURPOSE CENTER EMERGENCY / SATELLITE WAREHOUSE/ CHAPEL GELIZEAU, BEQUA</p>
--	--



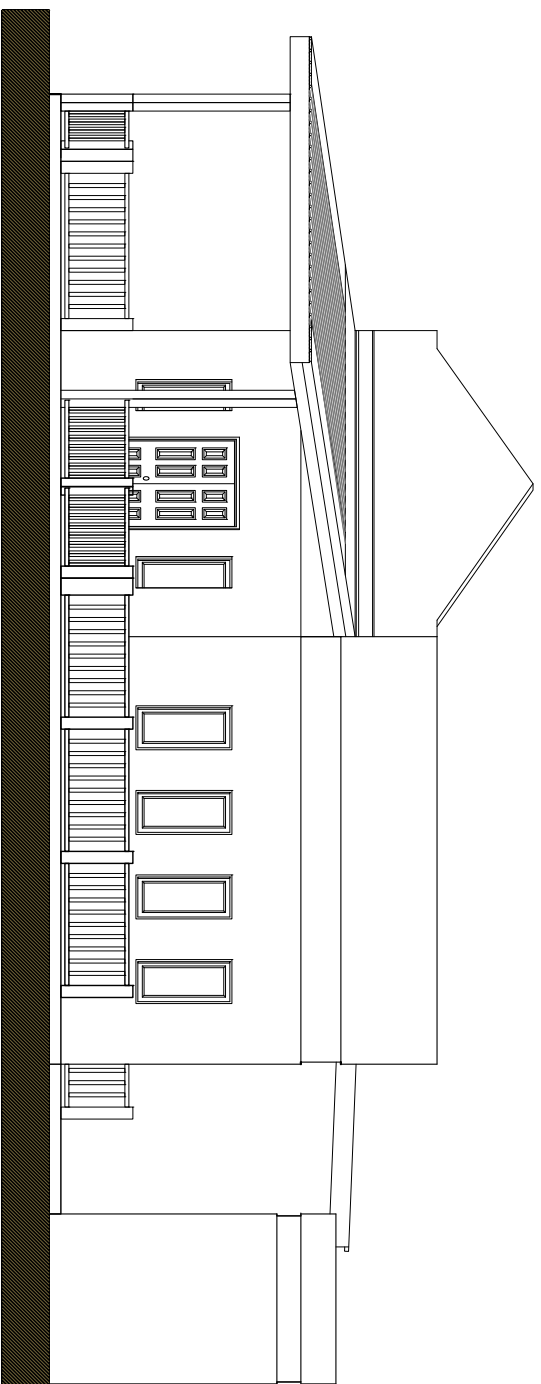
1
 FRONT ELEVATION
 Scale: 3/16" = 1'-0"

NO.	DATE	DESCRIPTION	DRAWN	CHECKED	NO.	DATE
1	2/26/19	ISSUES, REVISIONS, STORAGE & WASHING ROOM			9	
2	2/26/19	REVISIONS, REVISIONS, REVISIONS, STORAGE & WASHING ROOM			10	
3					11	
4					12	
5					13	
6					14	
7					15	
8					16	

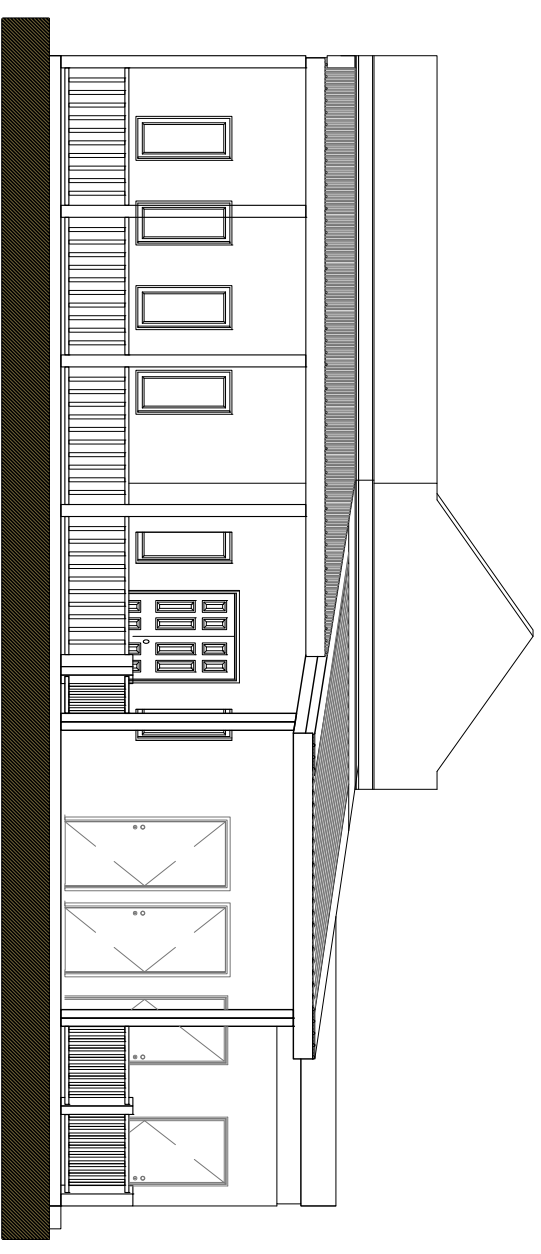
NO.	DATE	DESCRIPTION	DRAWN	CHECKED
9				
10				
11				
12				
13				
14				
15				
16				

	PROJECT: NORTHERN GRENADINES COMMUNITY DEV. INC. (NGCDI) MULTIPURPOSE CENTER EMERGENCY / SATELLITE WAREHOUSE/ CHAPEL GELIZEAU, BEQUA	SHEET NO. 02
	DRAWING TITLE: FRONT ELEVATION	REVISION NO. 02
DESIGNED BY: HCL	CHECKED BY: HCL	DATE: JANUARY 2019
FILE NAME: HCL_019046101.DWG	SCALE: AS SHOWN	SHEET NO. CG-A401

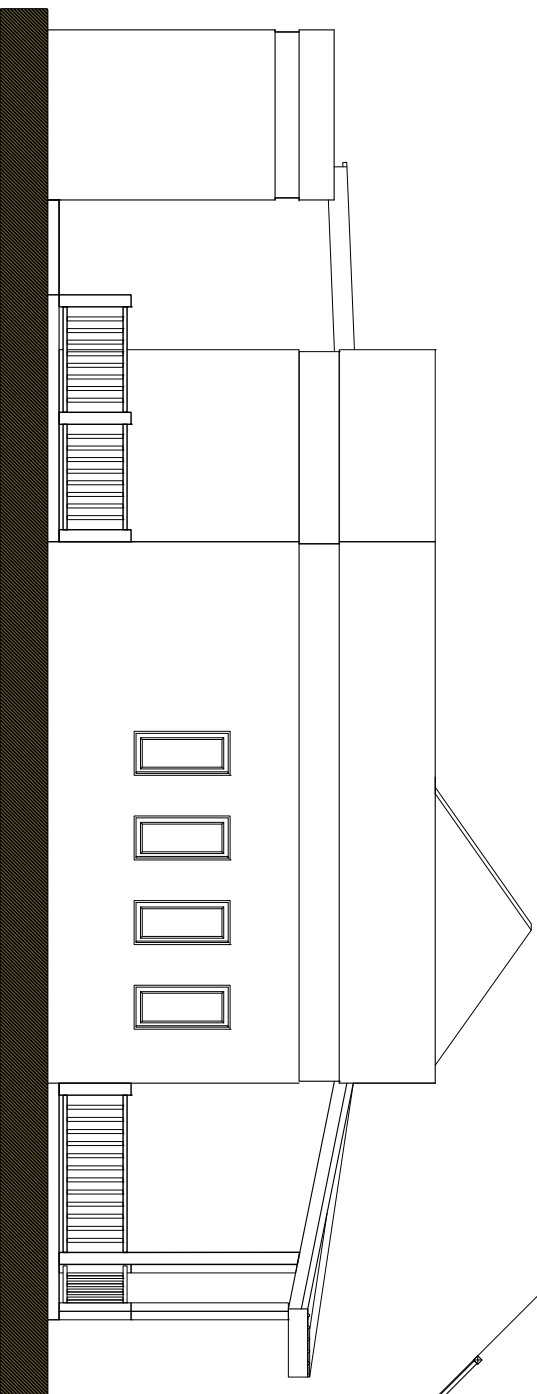
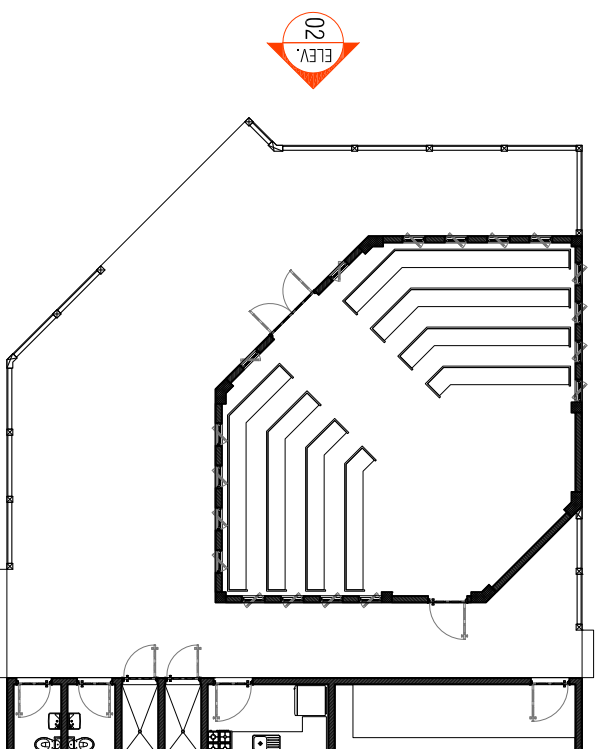
BRONX OFFICE: 100 E. 10TH ST. BRONX, NY 10431-1000 TEL: (718) 491-3000 FAX: (718) 491-3001 EMAIL: hutchinson@hutchinson.com	ST. ANNE'S OFFICE: 100 E. 10TH ST. BRONX, NY 10431-1000 TEL: (718) 491-3000 FAX: (718) 491-3001 EMAIL: hutchinson@hutchinson.com
--	---



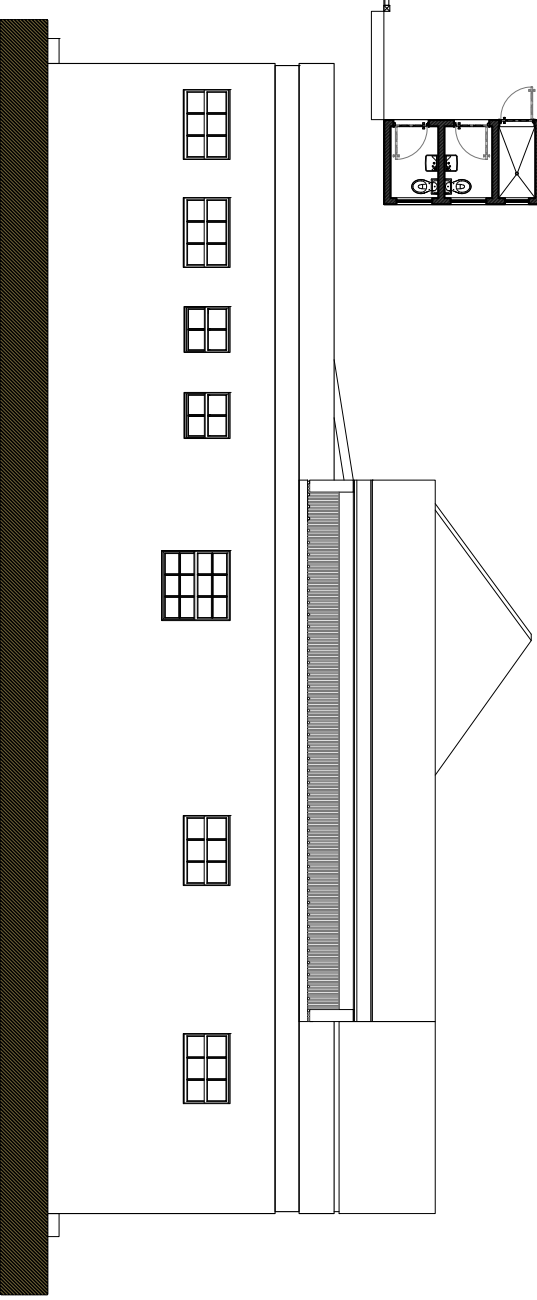
1
ELEVATION 01
CG-A402
Scale: 1/8" = 1'-0"



2
ELEVATION 02
CG-A402
Scale: 1/8" = 1'-0"



3
ELEVATION 03
CG-A402
Scale: 1/8" = 1'-0"

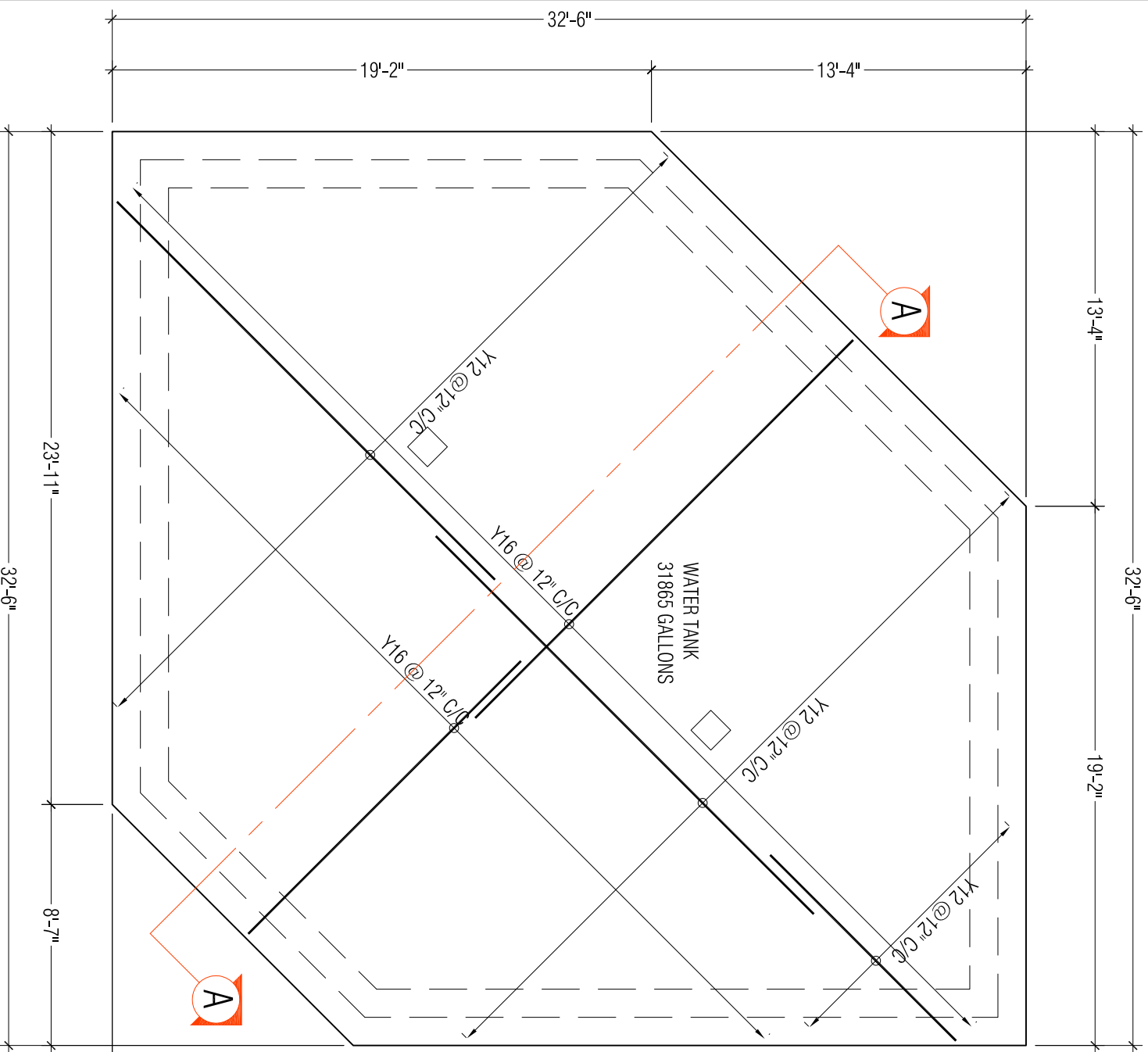


4
ELEVATION 04
CG-A402
Scale: 1/8" = 1'-0"

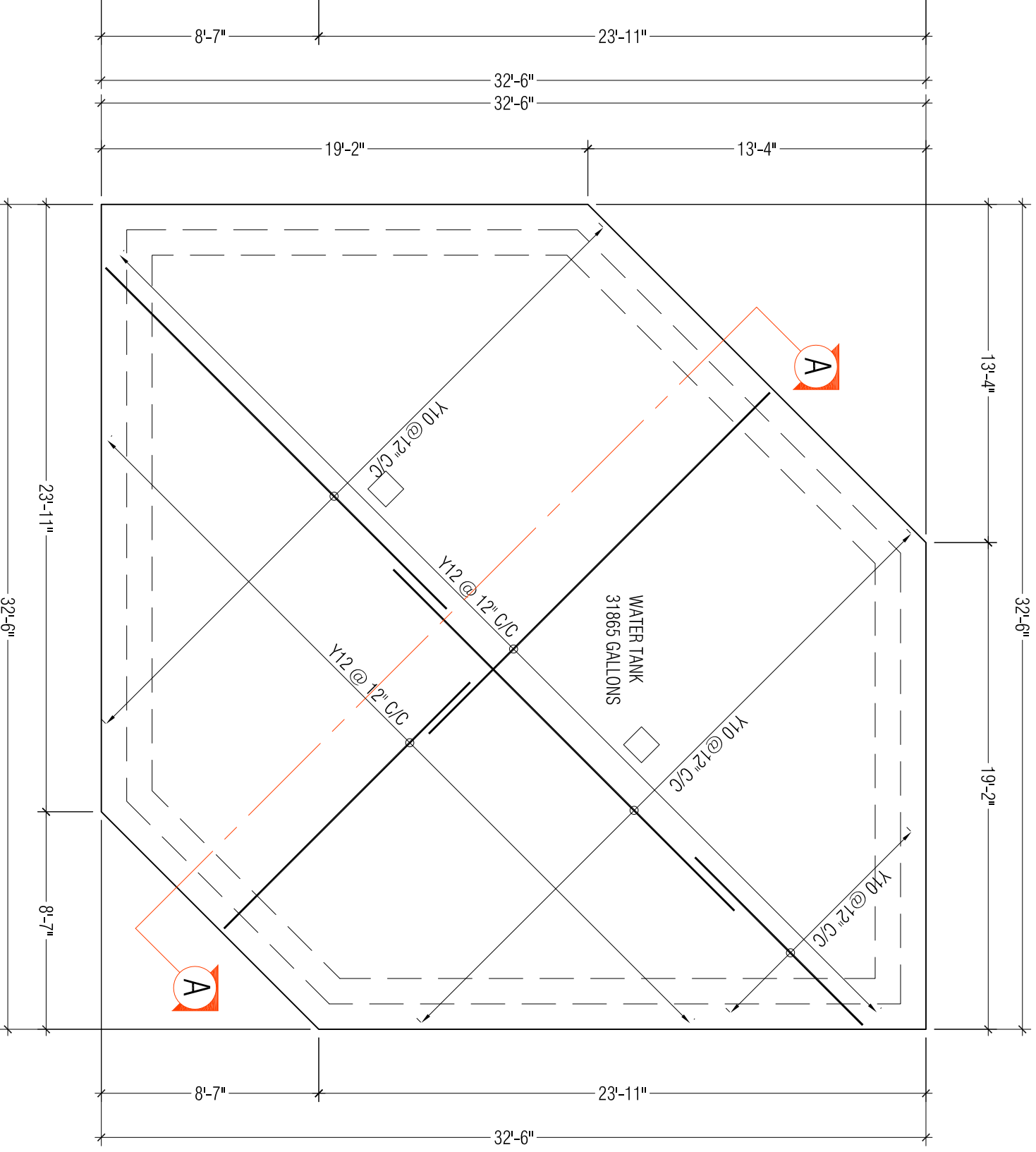
NO.	DATE	DESCRIPTION	DRAWN	CHECKED	NO.	DATE
1	2/26/19	SOONERS, WIPERETTE, STORAGE & WASH TRAY ADD			9	
2	2/26/19	REPAIRING TRAILER SOONERS, WIPERETTE, STORAGE CHANGERS.			10	
3					11	
4					12	
5					13	
6					14	
7					15	
8					16	

NO.	DATE	DESCRIPTION	DRAWN	CHECKED
9				
10				
11				
12				
13				
14				
15				
16				

	BRDRA OFFICE: PO BOX 1000 BRDRA, ST. MARYS TEL: 709-464-2088 FAX: 709-464-2089	CLIENT: NORTHERN GRENADINES COMMUNITY DEV. INC. (NGCDI)
	ST. MARYS OFFICE: 1000 WINDY HILL ROAD STREET CALIFORNIA, ST. MARYS TEL: 709-464-2089 EMAIL: hutchinson@stmarys.com	PROJECT: MULTI-PURPOSE CENTER EMERGENCY / SATELLITE WAREHOUSE/ CHAPEL GELIZEAU, BEQUA
DESIGNED: HCL	CHECKED: HCL	DATE: JANUARY 2019
FILE NAME: HCL_NORTHGRENADINES.DWG	SCALE: AS SHOWN	SHEET NO.: 02
PROJECT NO.: CG-A402		DRAWING NO.: CG-A402



1 WATER TANK BASE-BOTTOM STEEL
Scale: 3/16" = 1'-0"



2 WATER TANK BASE-TOP STEEL
Scale: 3/16" = 1'-0"

REV.	DATE	BY	CHKD.	DESCRIPTION
1				
2				
3				
4				
5				
6				
7				
8				
9				
10				
11				
12				
13				
14				
15				
16				

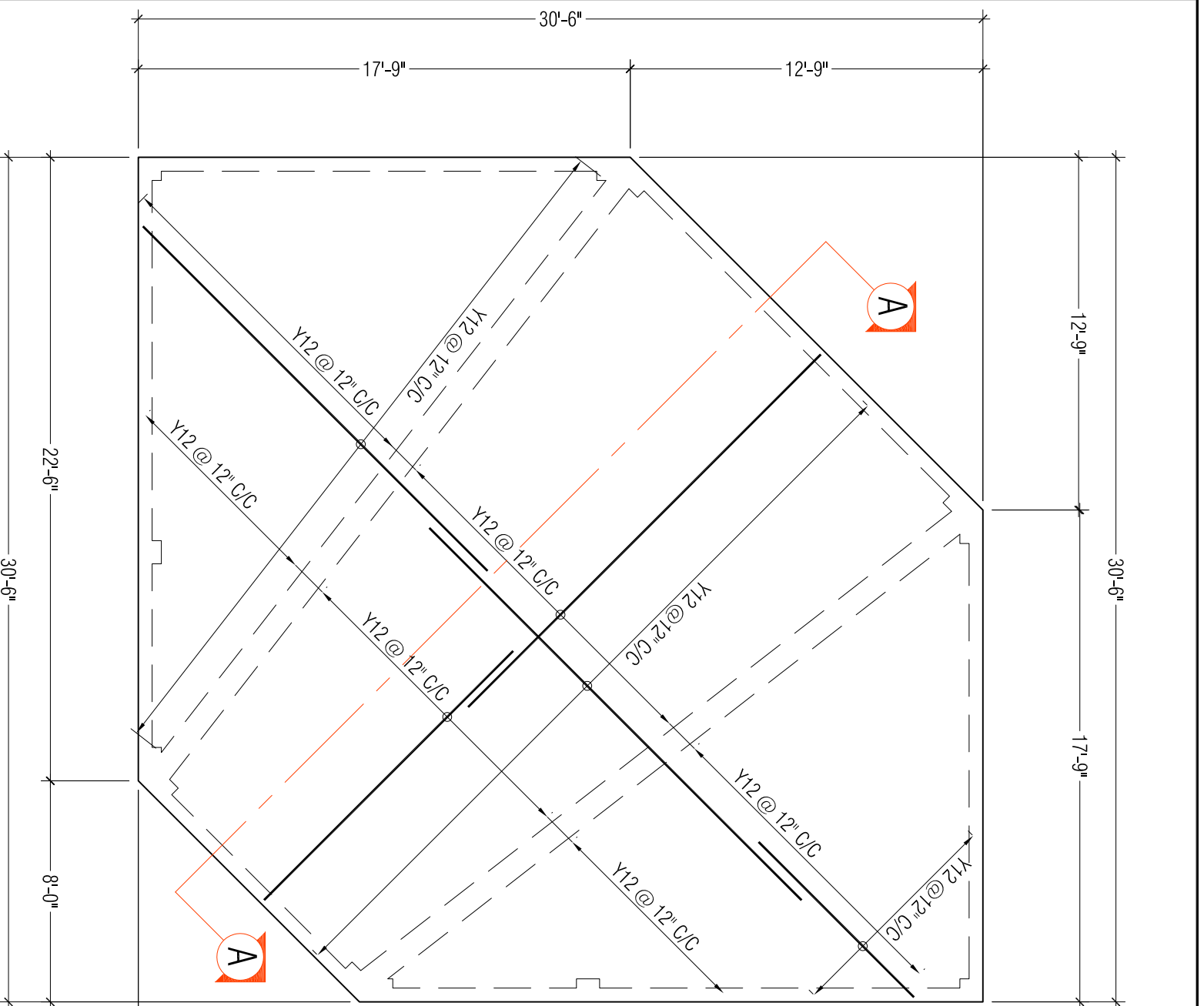
NO.	DATE	DESCRIPTION
1		
2		
3		
4		
5		
6		
7		
8		
9		
10		
11		
12		
13		
14		
15		
16		

	PROJECT: NORTHERN GRENADINES COMMUNITY DEV. INC. (NGCDI) MULTIPURPOSE CENTER EMERGENCY / SATELLITE WAREHOUSE/ CHAPEL GELIZEAU, BEQUA
	DRAWING TITLE: WATER TANK BASE-STEEL REINFORCEMENT SHEET NO.: 0

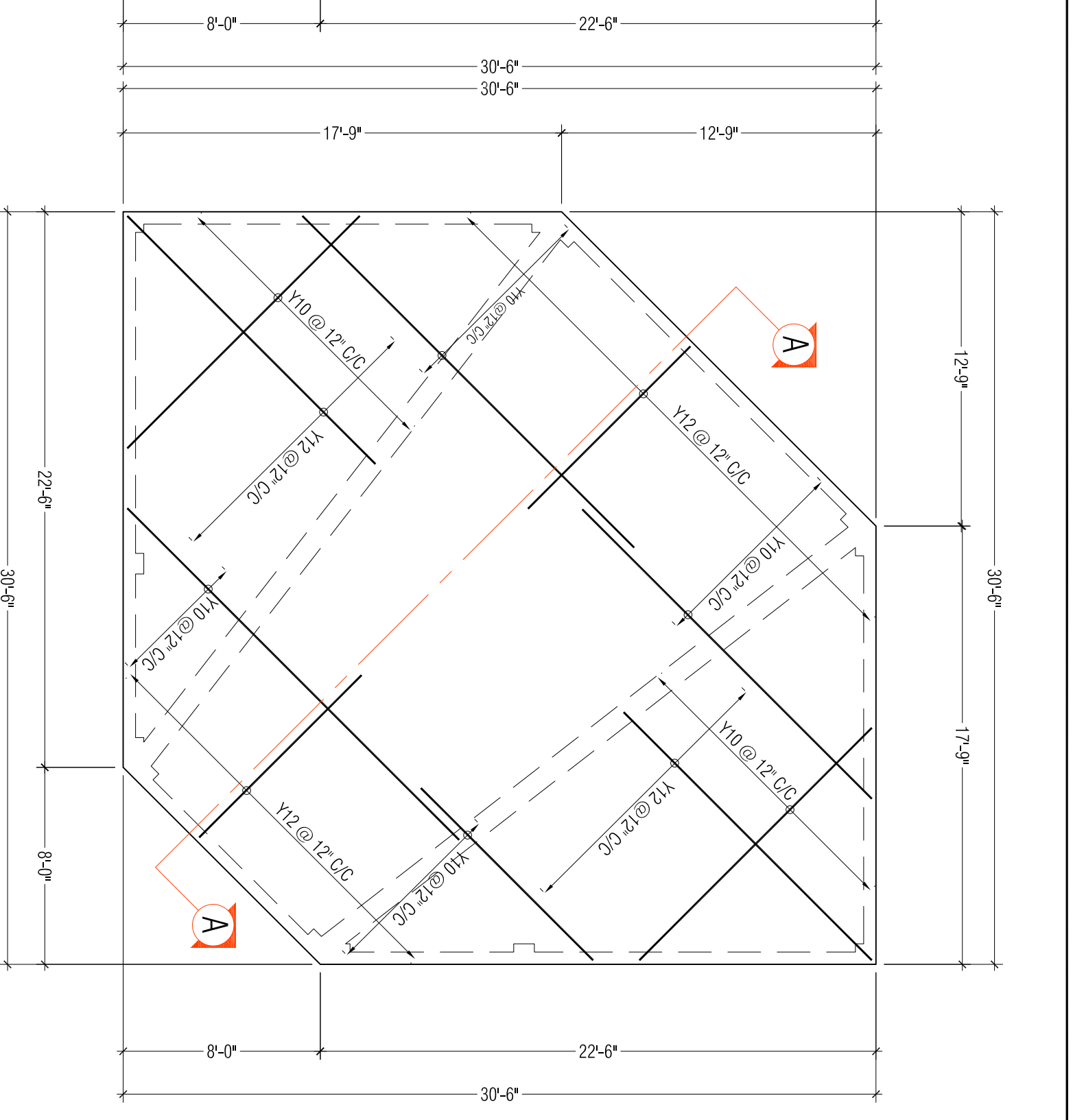
DESIGNER: [Name] CHECKED: [Name] DATE: JANUARY 2019	SCALE: AS SHOWN
---	-----------------

CLIENT: NORTHERN GRENADINES COMMUNITY DEV. INC. (NGCDI)	PROJECT: MULTIPURPOSE CENTER EMERGENCY / SATELLITE WAREHOUSE/ CHAPEL GELIZEAU, BEQUA
---	---

PROJECT: NORTHERN GRENADINES COMMUNITY DEV. INC. (NGCDI) MULTIPURPOSE CENTER EMERGENCY / SATELLITE WAREHOUSE/ CHAPEL GELIZEAU, BEQUA	DRAWING TITLE: WATER TANK BASE-STEEL REINFORCEMENT SHEET NO.: 0
--	--



1 ROOF SUSPENDED SLAB-BOTTOM STEEL
Scale: 3/16" = 1'-0"



2 ROOF SUSPENDED SLAB-TOP STEEL
Scale: 3/16" = 1'-0"

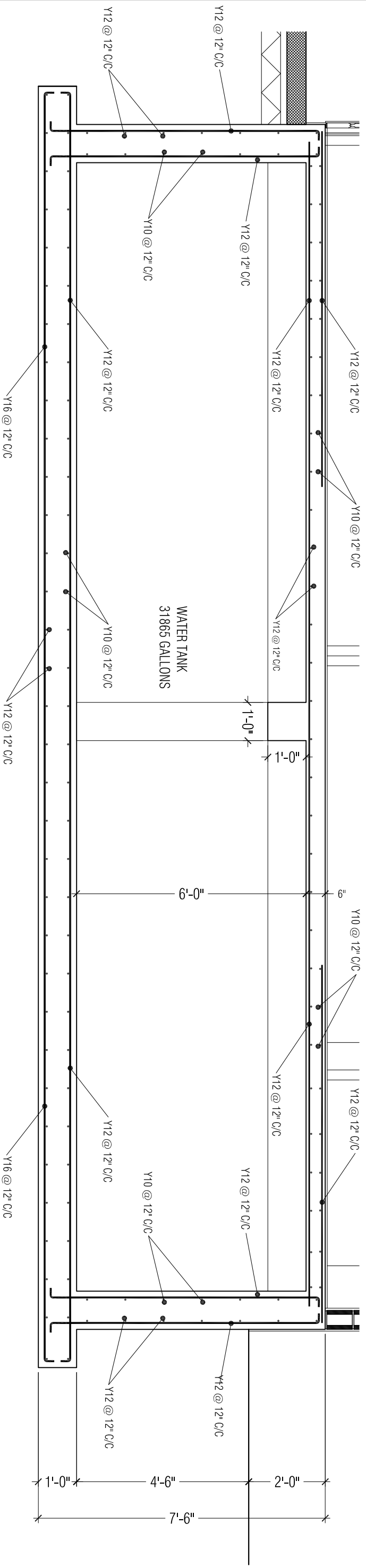
NO.	DATE	REVISIONS	BY	DATE
1				
2				
3				
4				
5				
6				
7				
8				
9				
10				
11				
12				
13				
14				
15				
16				

PROJECT	NORTHERN GRENADINES COMMUNITY DEV. INC. (NGCDI)
CLIENT	NORTHERN GRENADINES COMMUNITY DEV. INC. (NGCDI)
PROJECT TITLE	MULTI-PURPOSE CENTER
EMERGENCY / SATELLITE WAREHOUSE/ CHAPEL	GELITZEAU, BEQUIA
PROJECT ADDRESS	ST. ANNE'S CHURCH, ST. ANNE'S, GRENADA
PROJECT NO.	CG-S203
DATE	JANUARY 2019
SCALE	AS SHOWN
DESIGNED BY	CG-S203
CHECKED BY	
DATE	
SCALE	

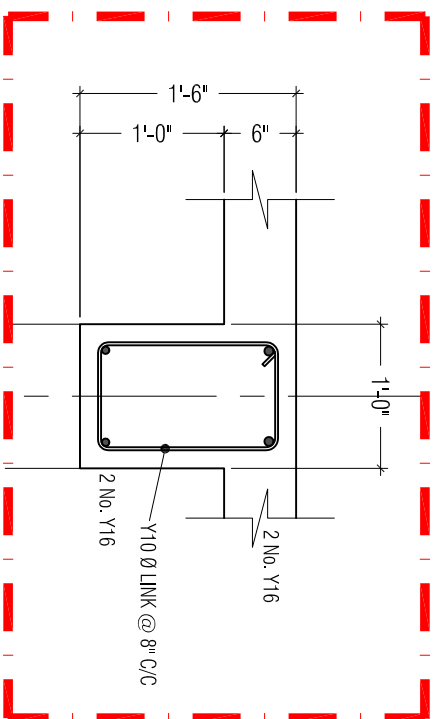
PROJECT	NORTHERN GRENADINES COMMUNITY DEV. INC. (NGCDI)
CLIENT	NORTHERN GRENADINES COMMUNITY DEV. INC. (NGCDI)
PROJECT TITLE	MULTI-PURPOSE CENTER
EMERGENCY / SATELLITE WAREHOUSE/ CHAPEL	GELITZEAU, BEQUIA
PROJECT ADDRESS	ST. ANNE'S CHURCH, ST. ANNE'S, GRENADA
PROJECT NO.	CG-S203
DATE	JANUARY 2019
SCALE	AS SHOWN
DESIGNED BY	CG-S203
CHECKED BY	
DATE	
SCALE	



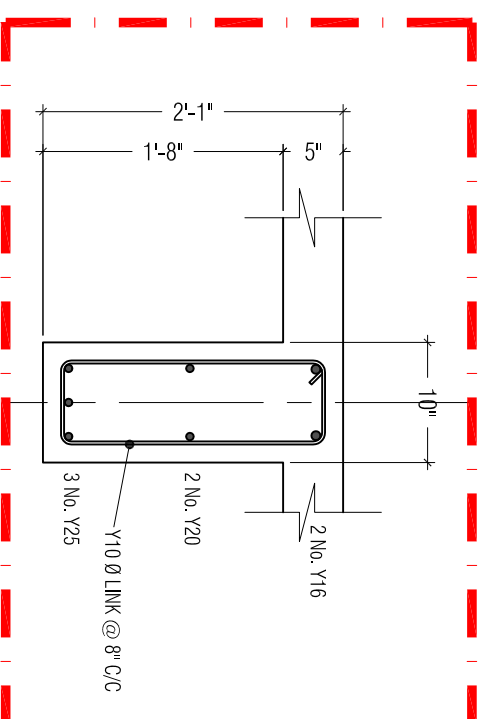
PROJ. NO. CG-S203
 PROJECT: NORTHERN GRENADINES COMMUNITY DEV. INC. (NGCDI)
 CLIENT: NORTHERN GRENADINES COMMUNITY DEV. INC. (NGCDI)
 PROJECT TITLE: MULTI-PURPOSE CENTER
 EMERGENCY / SATELLITE WAREHOUSE/ CHAPEL: GELITZEAU, BEQUIA
 PROJECT ADDRESS: ST. ANNE'S CHURCH, ST. ANNE'S, GRENADA
 PROJECT NO.: CG-S203
 DATE: JANUARY 2019
 SCALE: AS SHOWN
 DESIGNED BY: CG-S203
 CHECKED BY: [Blank]
 DATE: [Blank]
 SCALE: [Blank]



1
CG-S301
WATER TANK-SECTION A.-A.
Scale: 3/8" = 1'-0"



2
CG-S301
WATER TANK-BEAM DETAIL
Scale: 3/4" = 1'-0"



3
CG-S301
ROOF-BEAM DETAIL
Scale: 3/4" = 1'-0"

NO.	DATE	ISSUED	BY	CHECKED	DATE
1					
2					
3					
4					
5					
6					
7					
8					
9					
10					
11					
12					
13					
14					
15					
16					

NO.	DATE	ISSUED	BY	CHECKED	DATE
1					
2					
3					
4					
5					
6					
7					
8					
9					
10					
11					
12					
13					
14					
15					
16					

	PROJECT: NORTHERN GRENADINES COMMUNITY DEV. INC. (NGCDI) MULTIPURPOSE CENTER EMERGENCY / SATELLITE WAREHOUSE/ CHAPEL GELIZEAU, BEQUA
	DRAWN: [] CHECKED: [] DATE: []

CLIENT: NORTHERN GRENADINES COMMUNITY DEV. INC. (NGCDI) PROJECT: MULTIPURPOSE CENTER EMERGENCY / SATELLITE WAREHOUSE/ CHAPEL GELIZEAU, BEQUA	DRAWN: [] CHECKED: [] DATE: []
--	---

PROJECT: WATER TANK-SECTION & DETAIL SHEET NO. 0 SCALE: AS SHOWN	DRAWN: [] CHECKED: [] DATE: []
--	---